



RT 45 i
45t capacity class
Rough terrain crane
Datasheet
metric



RT 45 i

WORKS FOR YOU.™

CONTENTS

RT 45 i

INDEX

	Page :
Key	3
Highlights	4
Weights	5
Dimensions	6-7
Steering Radii	8
Range Graph	9, 12
Load Chart	10-11 13-16
Technical Specifications	
Boom	17
Hoist	17
Upper Structure	18
Cab and Controls	18
Carrier	19
Vehicle Performance	20
Tires	20
Options	20-22
Notes to lifting capacity	23

KEY

LEGEND

RT 45 i

	Counterweight		Boom extension
	Main boom		Performance
	Boom length		Boom elevation angle
	Tip height		Working radius
	Angular offsets		Minimum distance between hook block and boom head
	Aux head		Slewing locked
	Slewing / Allowable range		Slewing gears
	Outriggers / Lifting on outriggers		Lifting on wheels / Pick & Carry
	Main hoist		Auxiliary hoist
	Hoist speed		Rope length
	Rope		Line pull
	Rope diameter		Tires
	Hook block		Engine
	Cab		Steering
	Controls		Speed
	Mechanical transmission		Heating / Air conditioning
	Hydraulics		Gradeability
	Operation temperature		Gross vehicle weight
	Lights		Weight on front axle
	Crane / Crane in standard configuration		Weight on rear axle
	Crane without counterweight		No. of sheaves
	Rated weight on hook block		Rams-horn hook
	No. of lines		Differential lock
	Single hook		
	Electric circuit		

HIGHLIGHTS

MAIN FEATURES

RT 45 i

▶ Rated capacity

45 t at 3 m working radius

▶ Maximum main boom length

31.1 m

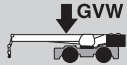
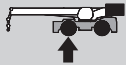
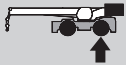
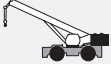








▶ Maximum tip height

33.0 m

▶ Maximum hook height

30.4 m



			
 without hook block ·	28 800 kg	13 900 kg	14 900 kg
Add / Subtract for main optional equipment			
 8 m lattice stowed aside the boom	+ 840 kg		
 2 **	+ 600 kg	- 70 kg	+ 670 kg
 45 t* (STD Hook)	+ 400 kg	+ 630 kg	- 230 kg
 35 t* (Optional Hook)	+ 280 kg	+ 440 kg	- 160 kg
 25 t* (Optional Hook)	+ 260 kg	+ 410 kg	- 150 kg
 15 t* (Optional Hook)	+ 194 kg	+ 305 kg	- 110 kg
 10 t* (Optional Hook)	+ 170 kg	+ 270 kg	- 100 kg
 5 t* (Optional Hook)	+ 50 kg	+ 80 kg	- 30 kg

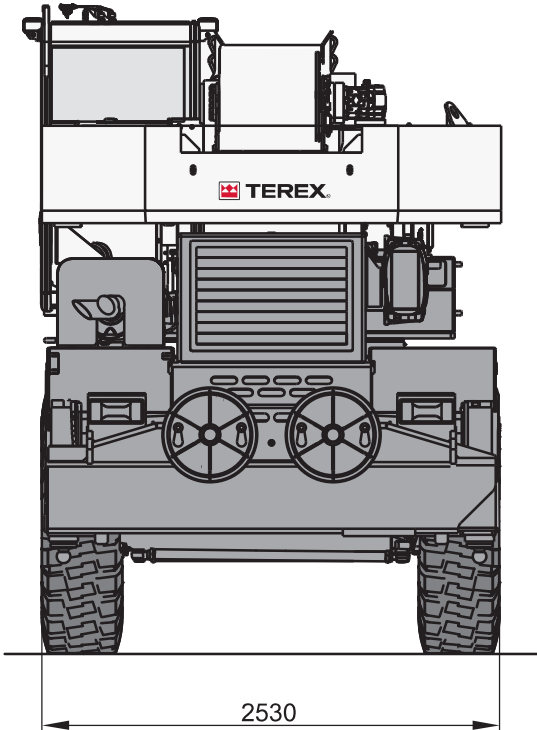
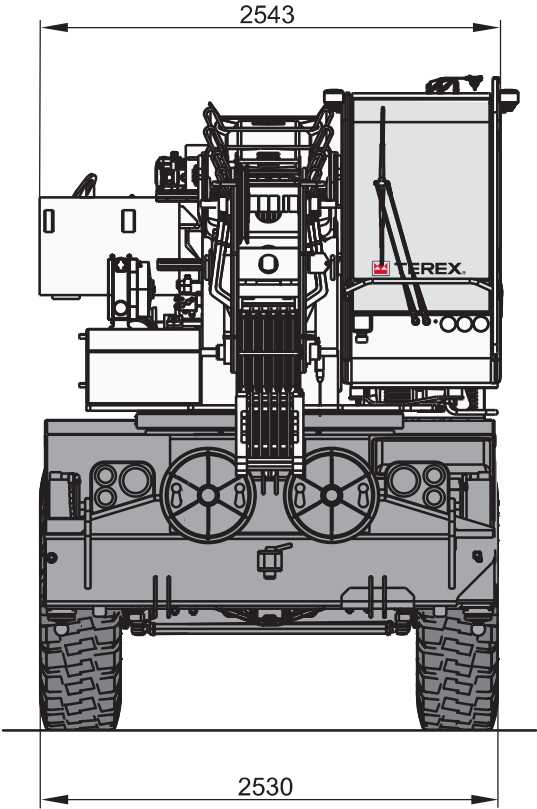
NOTE: Values are subject to 2% variation

* Weight distribution calculated considering the hook block linked to the front shield of the machine

** Weight includes rope

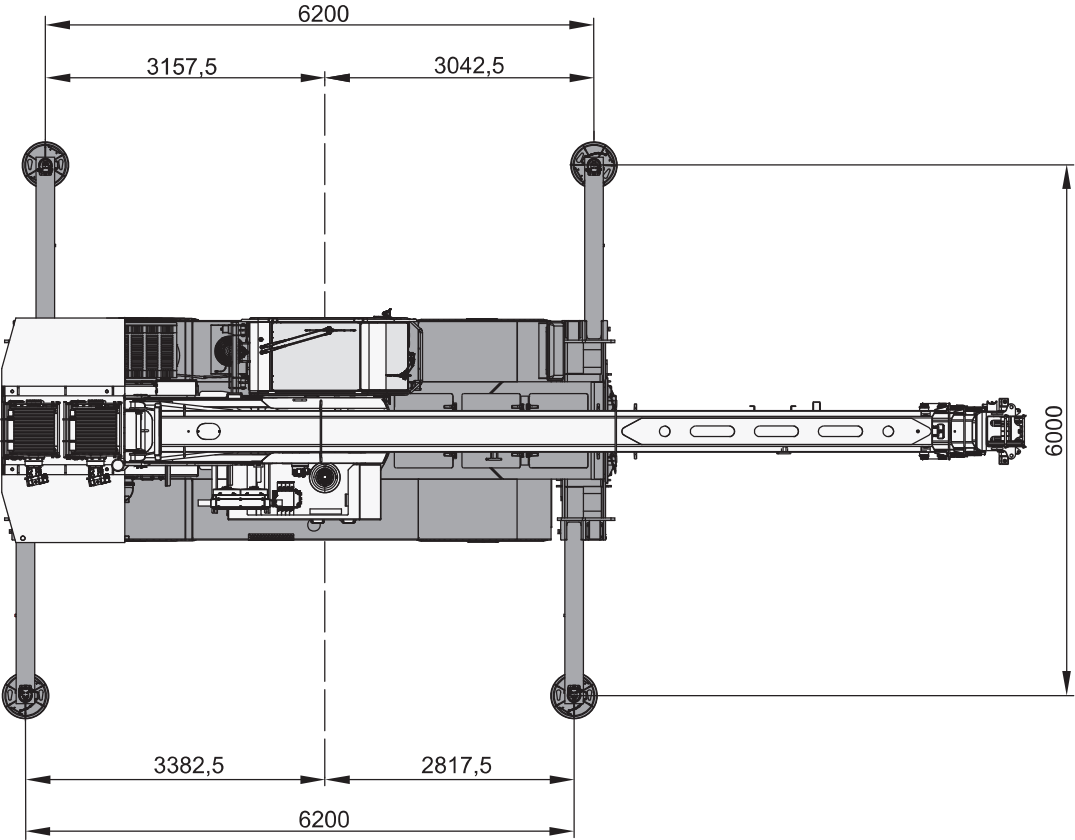
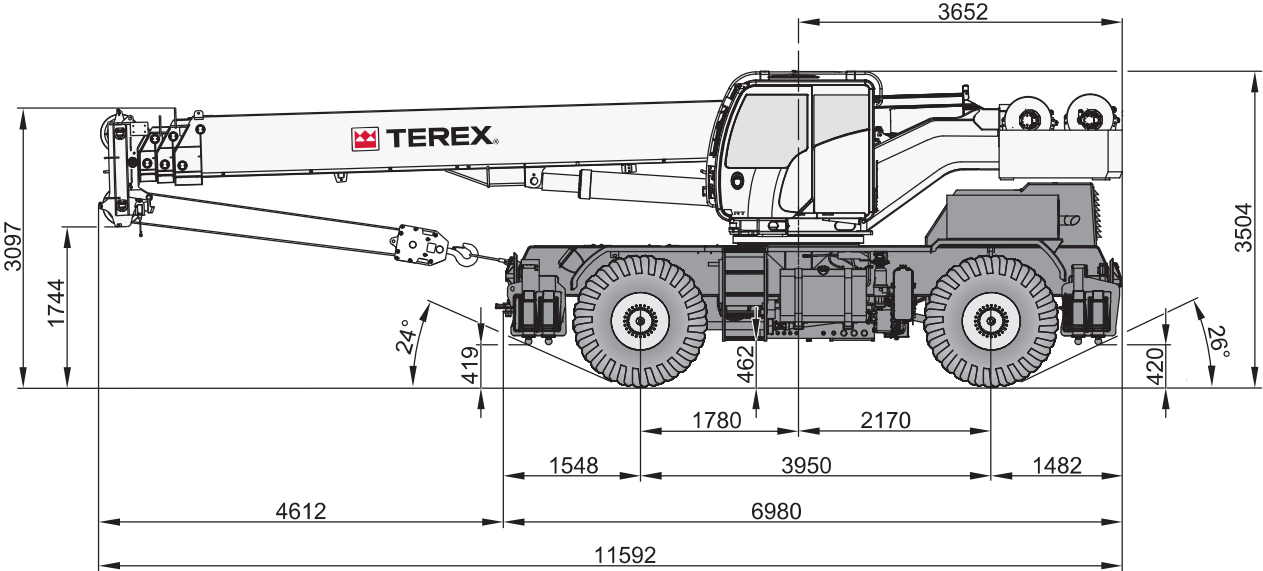
DIMENSIONS

RT 45 i



DIMENSIONS

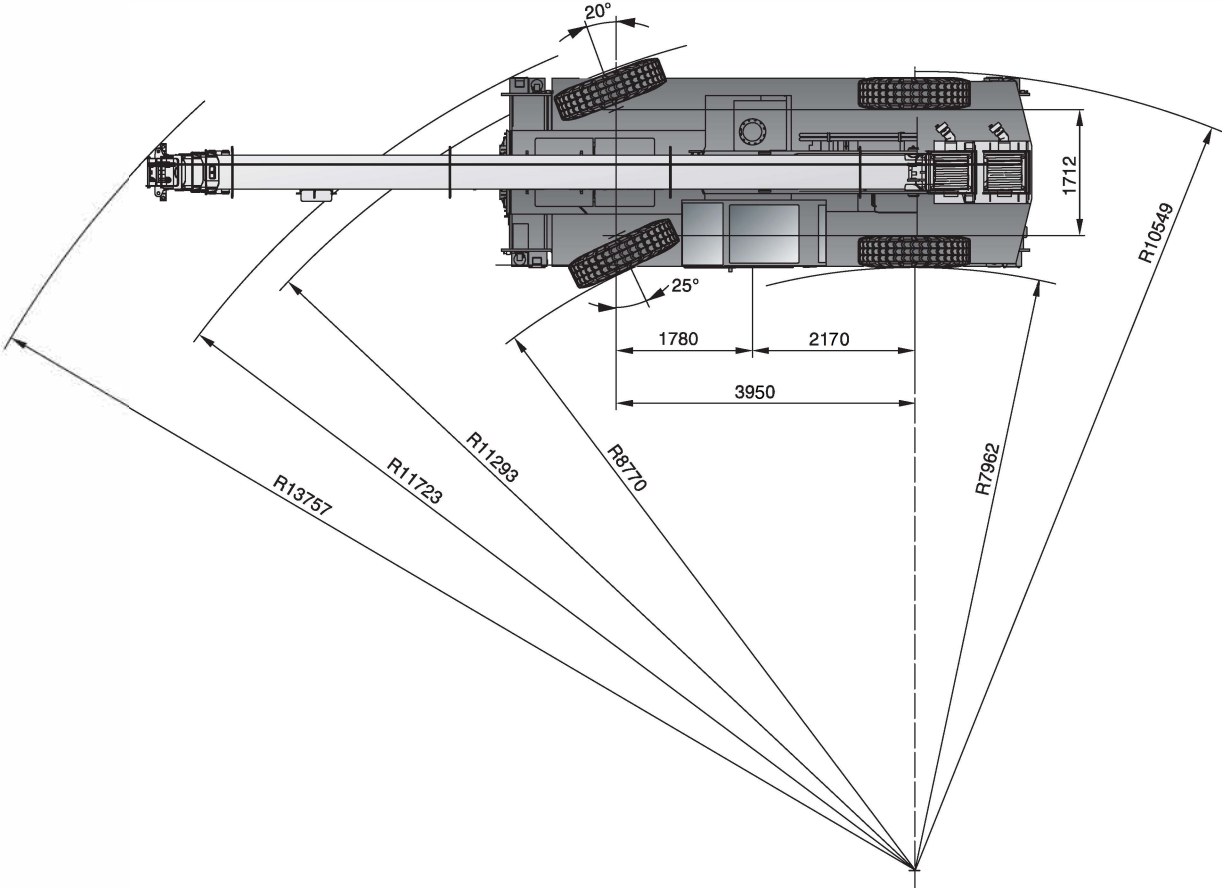
RT 45 i



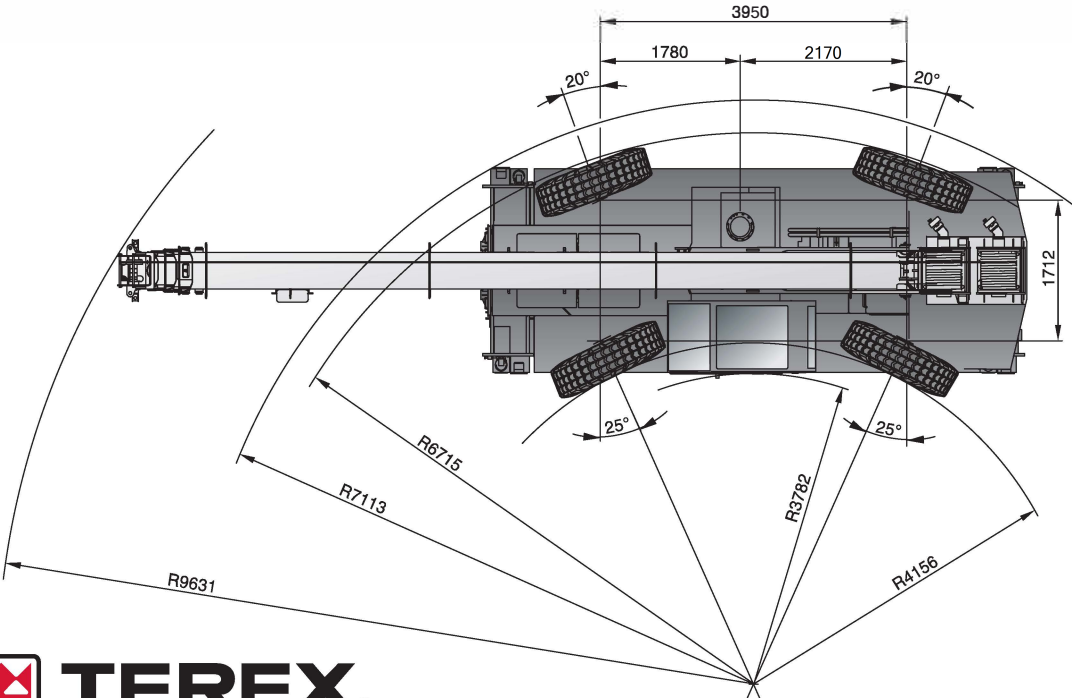
STEERING RADII

RT 45 i

Two wheel steer

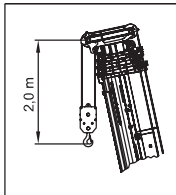


Four wheel steer

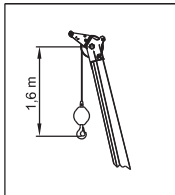


RANGE GRAPH – MAIN BOOM

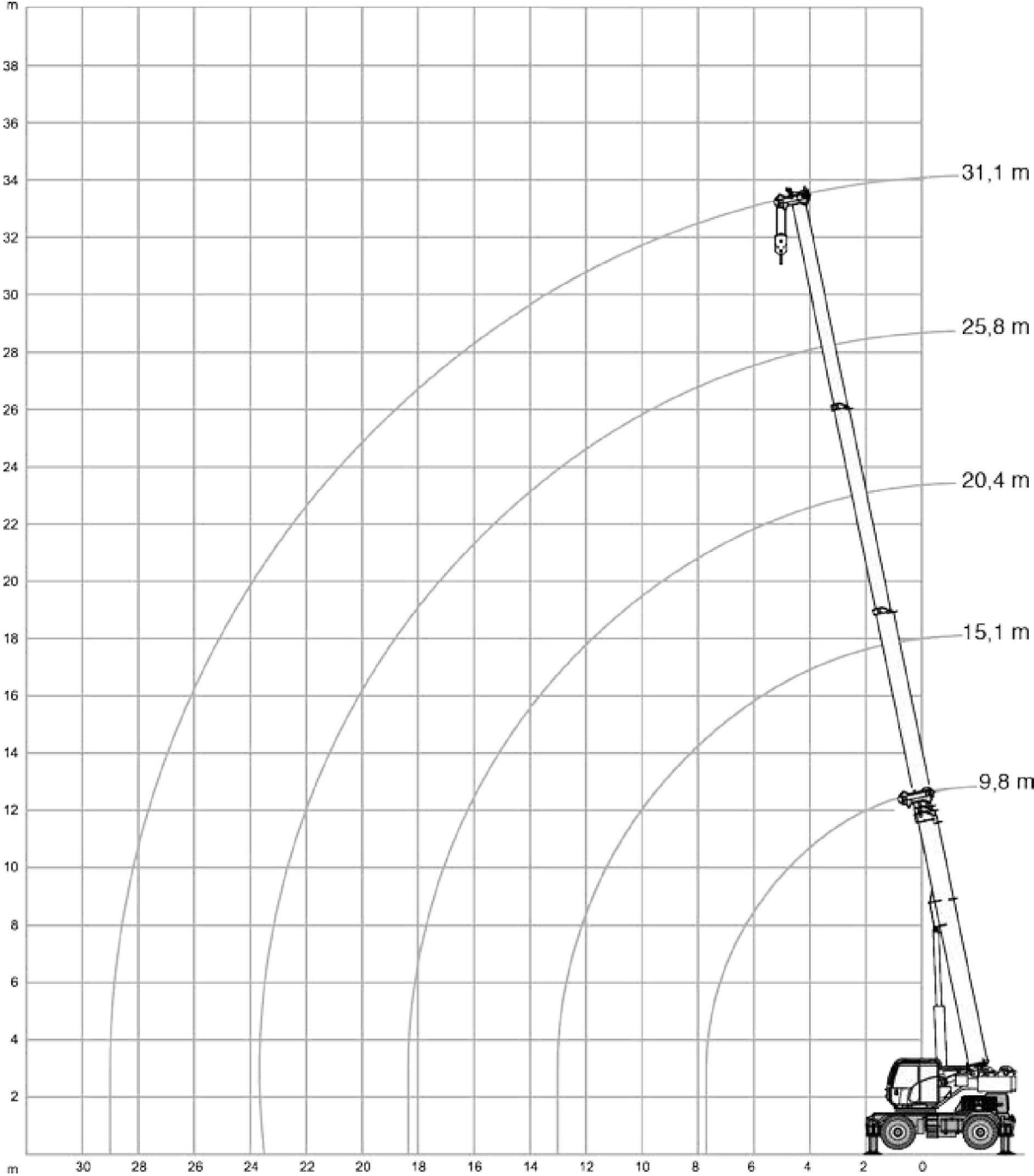
RT 45 i



(STD Hook)



5T Overhaul ball (If fitted)

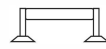


LOAD CHART – MAIN BOOM

RT 45 i

Outriggers Fully Extended (100 %)

 5,5 t

 6,00 x 6,20 m
(100 %)

 360°

Standard ASME
B30.5

 m						 m
	9,8 m	15,13 m	20,45 m	25,8 m	31,1 m	
m	t	t	t	t	t	m
3,0	45,00	28,40	17,00			3,0
3,5	34,10	27,20	17,10			3,5
4,0	28,60	26,20	17,40	10,00		4,0
4,5	25,20	25,20	17,80	10,10		4,5
5,0	22,20	24,30	16,10	12,10		5,0
6,0	18,30	19,80	14,50	12,00	6,80	6,0
7,0	15,50	16,20	13,10	10,80	7,40	7,0
8,0		13,70	12,00	9,90	8,00	8,0
9,0		11,90	11,10	9,00	7,80	9,0
10,0		8,85	9,00	8,30	7,20	10,0
11,0		7,50	7,60	7,70	6,50	11,0
12,0		6,40	6,50	7,20	6,00	12,0
13,0		5,55	5,70	5,70	5,50	13,0
14,0			5,00	5,00	5,10	14,0
15,0			4,30	4,35	4,30	15,0
16,0			3,80	3,85	4,20	16,0
17,0			3,40	3,45	3,90	17,0
18,0			3,00	3,10	3,10	18,0
19,0				2,75	2,80	19,0
20,0				2,45	2,50	20,0
21,0				2,20	2,25	21,0
22,0				2,00	2,05	22,0
23,0				1,80	1,80	23,0
24,0					1,65	24,0
25,0					1,45	25,0
26,0					1,30	26,0
27,0					1,15	27,0
28,0					1,05	28,0
29,0					0,90	29,0

Notes to lifting capacity

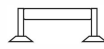
see page 23

LOAD CHART – MAIN BOOM

RT 45i



Outriggers Half Extended (50 %)

 5,5 t

 4,10 x 6,20 m
(50 %)

 360°

Standard ASME
B30.5

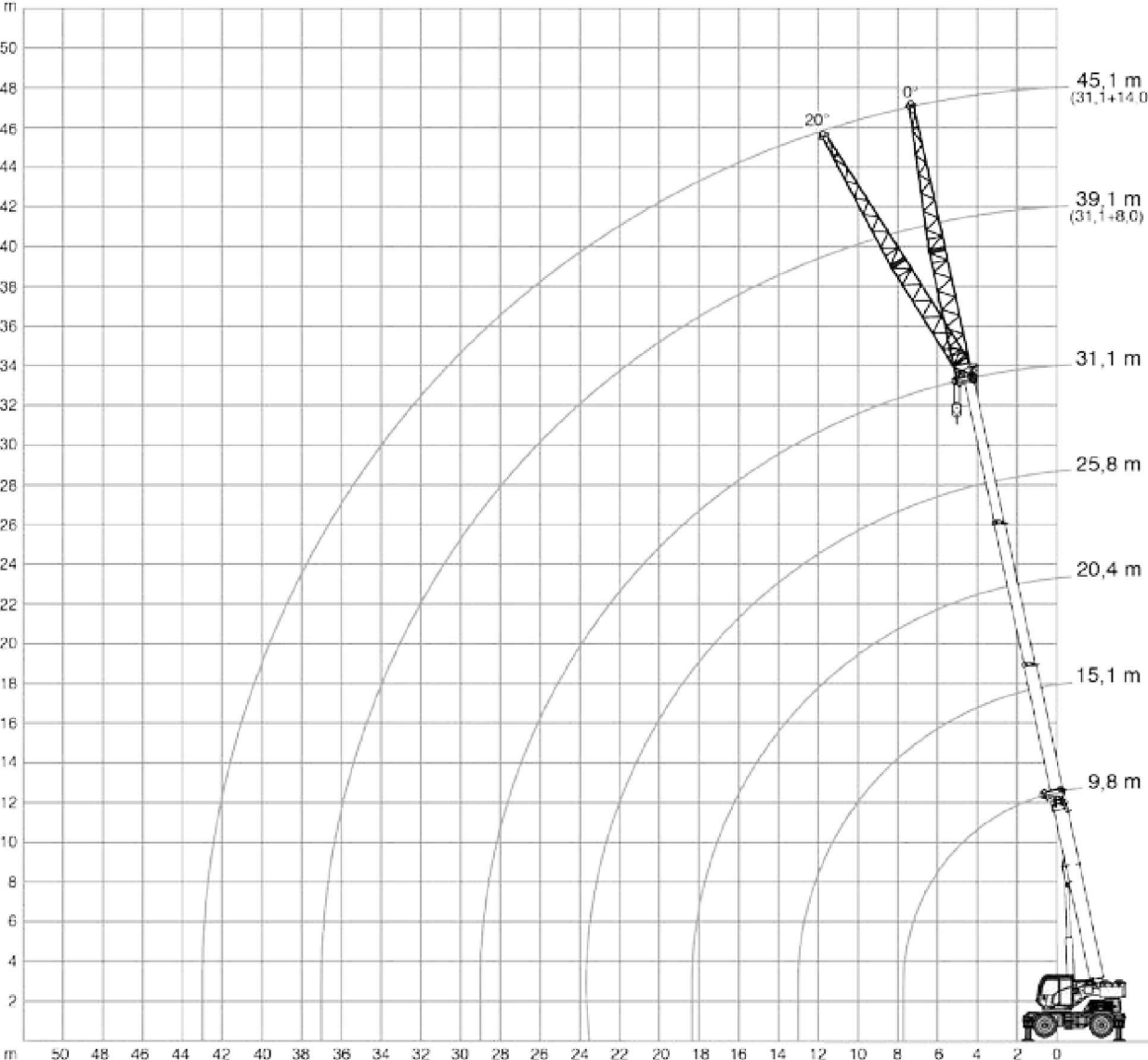
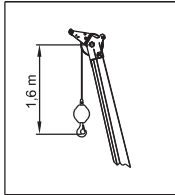
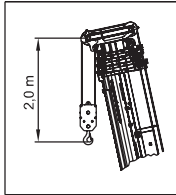
 m						 m
	9,8 m	15,1 m	20,4 m	25,8 m	31,1 m	
m	t	t	t	t	t	m
3,0	43,00	28,40	17,00			3,0
3,5	34,10	27,20	17,10			3,5
4,0	25,35	26,20	17,40	10,00		4,0
4,5	19,95	19,80	17,80	10,10		4,5
5,0	16,25	16,30	16,10	12,10		5,0
6,0	11,55	11,80	11,80	12,00	6,80	6,0
7,0	8,75	9,00	9,10	9,00	7,40	7,0
8,0		7,15	7,20	7,25	8,00	8,0
9,0		5,80	5,95	5,95	5,85	9,0
10,0		4,75	4,90	4,95	4,95	10,0
11,0		4,00	4,10	4,15	4,15	11,0
12,0		3,35	3,50	3,50	3,45	12,0
13,0		2,75	2,90	2,95	2,95	13,0
14,0			2,45	2,55	2,60	14,0
15,0			2,10	2,15	2,20	15,0
16,0			1,80	1,85	1,90	16,0
17,0			1,50	1,60	1,65	17,0
18,0			1,30	1,35	1,40	18,0
19,0				1,15	1,20	19,0
20,0				0,95	1,00	20,0
21,0				0,80	0,85	21,0
22,0				0,65	0,70	22,0
23,0				0,50	0,55	23,0
24,0					0,40	24,0

Notes to Lifting Capacity

see page 23

RANGE GRAPH - JIB

RT 45i




LOAD CHART – JIB

RT 45 i

Outriggers Fully Extended (100 %)

 5,5 t

 6,00 x 6,20 m
(100 %)

 360°

Standard ASME
B30.5

 31,1 m					
	 8 m		 14 m		
	0°	20°	0°	20°	
m	t	t	t	t	m
7,0	5,20				7,0
8,0	5,30		3,20		8,0
9,0	5,30	3,20	3,20		9,0
10,0	5,20	3,10	3,15		10,0
11,0	4,80	3,00	3,05		11,0
12,0	4,50	2,95	2,90	1,65	12,0
13,0	4,20	2,90	2,80	1,60	13,0
14,0	3,90	2,85	2,70	1,60	14,0
15,0	3,60	2,80	2,60	1,55	15,0
16,0	3,40	2,75	2,50	1,50	16,0
17,0	3,20	2,70	2,40	1,50	17,0
18,0	3,00	2,65	2,30	1,45	18,0
19,0	2,60	2,60	2,20	1,45	19,0
20,0	2,40	2,45	2,10	1,40	20,0
21,0	2,15	2,30	2,00	1,40	21,0
22,0	1,90	2,15	1,90	1,35	22,0
23,0	1,70	1,90	1,80	1,30	23,0
24,0	1,55	1,65	1,75	1,30	24,0
25,0	1,35	1,60	1,65	1,25	25,0
26,0	1,20	1,30	1,60	1,25	26,0
27,0	1,05	1,20	1,50	1,15	27,0
28,0	0,95	1,05	1,40	1,10	28,0
29,0	0,80	0,90	1,15	1,05	29,0
30,0	0,70	0,85	1,05	1,05	30,0
31,0	0,60	0,70	0,90	0,90	31,0
32,0	0,50	0,60	0,90	0,85	32,0
33,0	0,40	0,50	0,75	0,80	33,0
34,0	0,35	0,40	0,70	0,75	34,0
35,0	0,25	0,30	0,65	0,70	35,0
36,0	0,20	0,20	0,50	0,65	36,0
37,0			0,40	0,55	37,0
38,0			0,35	0,45	38,0
39,0				0,35	39,0
40,0				0,30	40,0

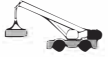
Notes to Lifting Capacity

see page 23

LOAD CHART – MAIN BOOM

RT 45 i

On Tires



5,5 t

360°

0 km/h

Standard ASME
B30.5

m	Main Boom					m
	9,8 m	15,1 m	20,4 m	25,8 m	31,1 m	
t	t	t	t	t	t	t
3,0	14,90	14,70	14,90			3,0
3,5	12,10	11,60	11,60			3,5
4,0	9,70	9,40	9,50	10,00		4,0
4,5	8,00	7,90	7,90	8,20		4,5
5,0	6,80	6,70	6,80	6,70		5,0
6,0	4,90	5,10	5,20	5,00	5,20	6,0
7,0	3,60	3,90	4,00	3,90	4,00	7,0
8,0		3,00	3,10	3,20	3,10	8,0
9,0		2,40	2,50	2,50	2,50	9,0
10,0		1,80	2,00	2,00	2,00	10,0
11,0		1,40	1,50	1,60	1,60	11,0
12,0		1,10	1,20	1,30	1,30	12,0
13,0		0,80	0,90	1,00	1,00	13,0
14,0			0,70	0,70	0,80	14,0
15,0			0,50	0,50	0,60	15,0
16,0			0,30	0,40	0,40	16,0

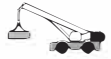
Notes to Lifting Capacity

see page 23

LOAD CHART – MAIN BOOM

RT 45 i

On Tires



5,5 t



Standard ASME
B30.5

m	Main Boom					m
	9,8 m	15,1 m	20,4 m	25,8 m	31,1 m	
t	t	t	t	t	t	t
3,0	17,0	17,20	17,00			3,0
3,5	15,20	15,50	15,50			3,5
4,0	13,70	13,90	14,10	10,00		4,0
4,5	12,40	12,60	12,80	10,10		4,5
5,0	11,30	11,50	11,60	12,10		5,0
6,0	9,40	9,60	8,60	9,60	6,80	6,0
7,0	7,20	7,40	7,50	6,60	7,40	7,0
8,0		5,10	5,20	5,20	5,20	8,0
9,0		4,20	4,20	4,30	4,20	9,0
10,0		3,40	4,00	3,50	3,60	10,0
11,0		2,80	2,90	3,40	3,00	11,0
12,0		2,70	2,80	2,50	2,90	12,0
13,0		2,00	2,10	2,10	2,40	13,0
14,0			2,00	1,80	2,10	14,0
15,0			1,70	1,70	1,80	15,0
16,0			1,40	1,50	1,50	16,0
17,0			1,20	1,20	1,30	17,0
18,0			1,00	1,00	1,10	18,0
19,0				0,90	0,90	19,0
20,0				0,70	0,70	20,0
21,0				0,50	0,60	21,0
22,0				0,40	0,50	22,0
23,0					0,30	23,0

Notes to Lifting Capacity

see page 23

LOAD CHART – MAIN BOOM

RT 45 i

On Tires



5,5 t



0 km/h




Standard ASME
B30.5

m	Main Boom					m
	9,8 m	15,1 m	20,4 m	25,8 m	31,1 m	
t	t	t	t	t	t	t
3,0	25,60	25,80	17,00			3,0
3,5	23,00	23,30	17,10			3,5
4,0	19,90	19,50	17,40	10,00		4,0
4,5	15,80	15,80	15,70	10,10		4,5
5,0	13,00	13,10	13,10	12,10		5,0
6,0	9,40	9,60	9,70	9,60	6,80	6,0
7,0	7,20	7,40	7,50	7,50	7,40	7,0
8,0		5,90	6,00	6,00	6,00	8,0
9,0		4,80	4,90	4,90	4,90	9,0
10,0		3,90	4,00	4,10	4,10	10,0
11,0		3,30	3,40	3,40	3,50	11,0
12,0		2,70	2,80	2,90	2,90	12,0
13,0		2,30	2,40	2,50	2,40	13,0
14,0			2,00	2,10	2,10	14,0
15,0			1,70	1,70	1,80	15,0
16,0			1,40	1,50	1,50	16,0
17,0			1,20	1,20	1,30	17,0
18,0			1,00	1,00	1,10	18,0
19,0				0,90	0,90	19,0
20,0				0,70	0,70	20,0
21,0				0,50	0,60	21,0
22,0				0,40	0,50	22,0
23,0				0,30	0,30	23,0

Notes to Lifting Capacity

see page 23

Boom

	4 sections	
	Min. / Max.	9.8 m / 31.1 m
	Max. main boom	33 m
	Boom luffing angle range min / max	-2° / +78°
	Boom raising / lowering time ⁽¹⁾	45 s / 70 s
	Boom extension / retraction time ⁽¹⁾	90 s / 90 s





Hoist

	Hydraulic motor	
	Rope roller device	
	Normally engaged brake	
	1 speed	
	Max. ⁽¹⁾	62 m/min
	Rotational resistant	
	Rope dia	16 mm
	Rope length	185 m
	Permissible line pull	45 kN







Upper Structure

		5.5 t
	Non stop Maximum speed⁽¹⁾	360° 1.5 rpm
	Hydraulic motor Planetary reducer	



Cab and Controls

	<p>Fix Cab Sliding door Wide visibility Front and upper window with windscreen wiper</p> <p>Upper windscreen with sun viser</p> <p>Fixed Cab Fully adjustable seat onto shockproof suspensions</p> <p>Equipped with tiltable arm rests with integrated hand controls for crane operation</p> <p>Radio with CD player · Seat belts ·</p>
	Air Conditioned Cab (Optional)
	<p>Electro-proportional joysticks</p> <p>Load indicator with graphic interface</p>
	3 adjustable working lights outside the cab (Optional)

Carrier


	Cummins QSB6.7 CEV BS IV	
	No. of cylinders	6
	Rated power	129 kW @ 2200 1/min.
	Maximum gross torque	881 Nm @ 1300 1/min.
	Fuel tank capacity	300 l
	Powershift with 2 modes:	
	Manual mode – 3 speeds forward and 3 speeds reverse	
	Automatic mode – 5 speeds forward and 3 speeds reverse	
	Permanent 4 wheel drive	
	Steering Modes :	
	Front wheel steering	
	Four wheel steering concentric	
	Four wheel steering crab	
	One three section pump – 2 sections variable displacement piston pump and 1 section gear pump	
	Electrical	24 V
	Rear axle differential lock	Switch Operated

Vehicle Performance




	Max. (2)	92.5 %
	Max. (2)	26.9 km/h
	Min. / Max.	-7° / 50 °C

Tires

Pneumatic

	Earth moving style	16.00R25
---	--------------------	----------

Options

	Single sheave	
	Lattice type, side stowable	8 m
	Lattice type, not side stowable	14 m
	Angular offsets	0° / 20°
Air Conditioning System		
360° Cameras		Reverse Camera
Man Carrying Basket		Spreader Bar
Telematics		Anemometer
	Hydraulic motor	
	Rope roller device	
	Normally engaged brake	

Rear towing hook

Wooden box for cab protection in sea shipment

Removable parts disassembling and put into wooden box tied to the crane

Disassembling of removable parts for sea shipment

Anti-corrosive protective waxing for sea shipping





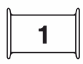



Special customer paint one colour on the whole crane

Special customer paint one colour only on the upper or lower part of the crane

Special customer paint two colours on the whole crane

Special customer paint of all boom elements

Special heavy painting suitable for corrosive environments

								
							Standard	Optional
45 t	5	10	•			•	•	
45 t	5	10	•		•			•
35 t	4	8	•			•		•
35 t	4	8	•		•			•
25 t	3	6	•			•		•
15 t	2	4	•	•		•		•
10 t	1	2	•	•		•		•
5 t	0	1	•			•		•

Note: refer to your local dealer for a full list of options.

(1) Indicative value only for reference.

(2) Standard crane in travelling configuration – value calculated with nominal tire radius and max power delivered to the wheels.

Page notes 10-11, 13-16

Weight of hook blocks and slings is part of the load, and is to be deducted from the capacity ratings. Consult Rated Capacity Manual for further details.

Note: Data published herein is intended as a guide only and shall not be construed to warrant applicability for lifting purposes. Crane operation is subject to the computer charts and Rated Capacity Manual both supplied with the crane.

TEREX CRANES

Rough Terrain Cranes

Via Cassoletta, 76 – Fraz. Crespellano
40053 Valsamoggia (BO)
Italy

Ph: +39 051 6501011
Email: info.cranes@terex.com

Tower Cranes

Via delle Innovazioni, 17
33074 Fontanafredda (PN)
Italy

Ph: +39 0434 989111
Email: info.cranes@terex.com

Rough Terrain Cranes

Terex India Pvt Ltd
Plot No : E-18, Expansion-II, Phase-II
SIPCOT, Krishnagiri Road, Hosur, 635 109, INDIA

Ph: +91 4344 352 200
Email: helpdesk.hosur@terex.com

March 2022. Product specifications and prices are subject to change without notice or obligation. The photographs and/or drawings in this document are for illustrative purposes only. Refer to the appropriate Operator's Manual for instructions on the proper use of this equipment. Failure to follow the corresponding Operator's Manual when using our equipment or to otherwise act responsibly may result in serious injury or death. The only warranty applicable to our equipment is the standard written warranty applicable to the particular product and sale and Terex makes no other warranty, express or implied. Products and services listed may be trademarks, service marks or trade-names of Terex Corporation and/or its subsidiaries in the USA and other countries. All rights are reserved. Terex, the Terex Crown design and Works For You are trademarks of Terex Corporation or its subsidiaries.



www.terex.com/cranes

Brochure Reference: RT-BR-45I



WORKS FOR YOU.™